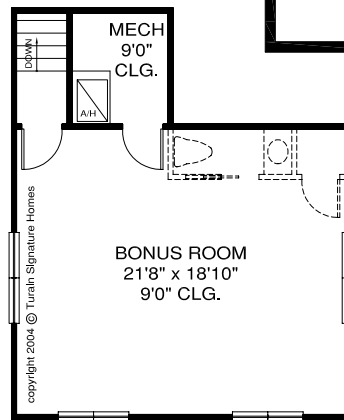


St. Andrew

Approx. Main Living Area:	3205 Sq. Ft.
Approx. Upper Living Area:	502 Sq. Ft.
Approx. Total Living Area:	3707 Sq. Ft.
Three Car Garage:	856 Sq. Ft.
Lanai 1:	65 Sq. Ft.
Lanai 2:	249 Sq. Ft.
Entry:	99 Sq. Ft.
Total Under Roof:	4976 Sq. Ft.

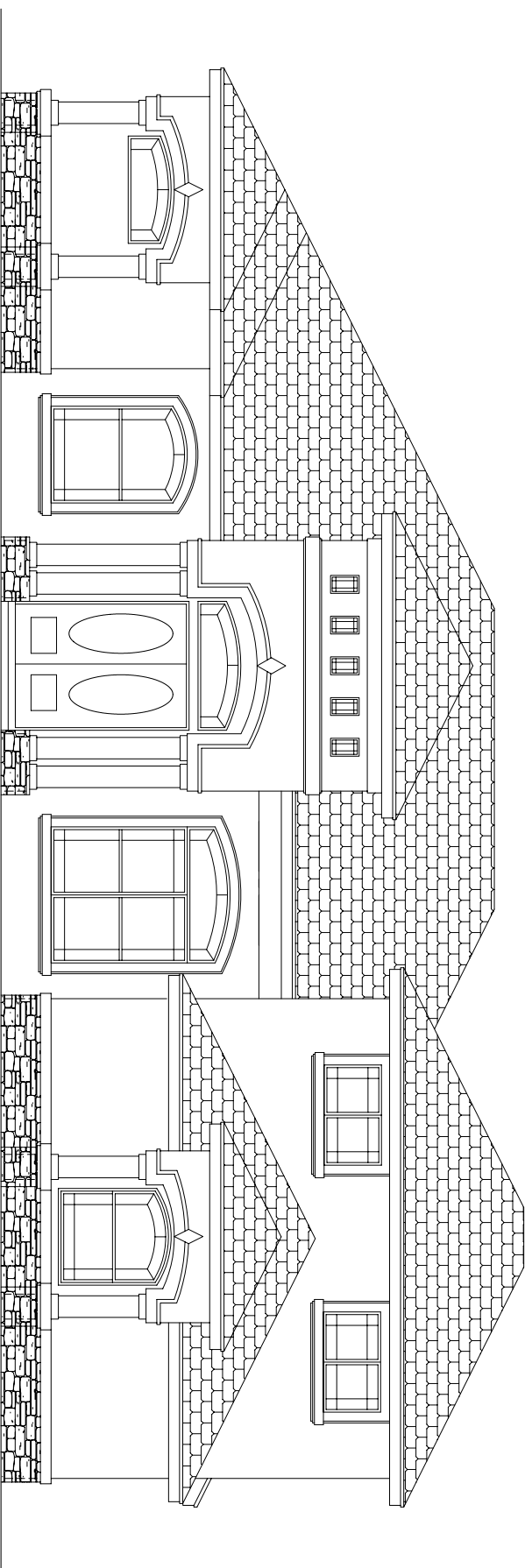


Greg Turain
 19123 Centre Rose Blvd.
 Lutz, Florida 33558
 813.714.3538 office
 813.926.8515 fax
 Greg@TurainSignatureHomes.com



UPPER FLOOR

97'-4"
64'-4"



copyright 2004 © Turain Signature Homes

St. Andrew w/ stone 1

Greg Turain

19123 Centre Rose Blvd.

Lutz, Florida 33558

813.714.3538 office

813.926.8515 fax

Greg@TurainSignatureHomes.com

