

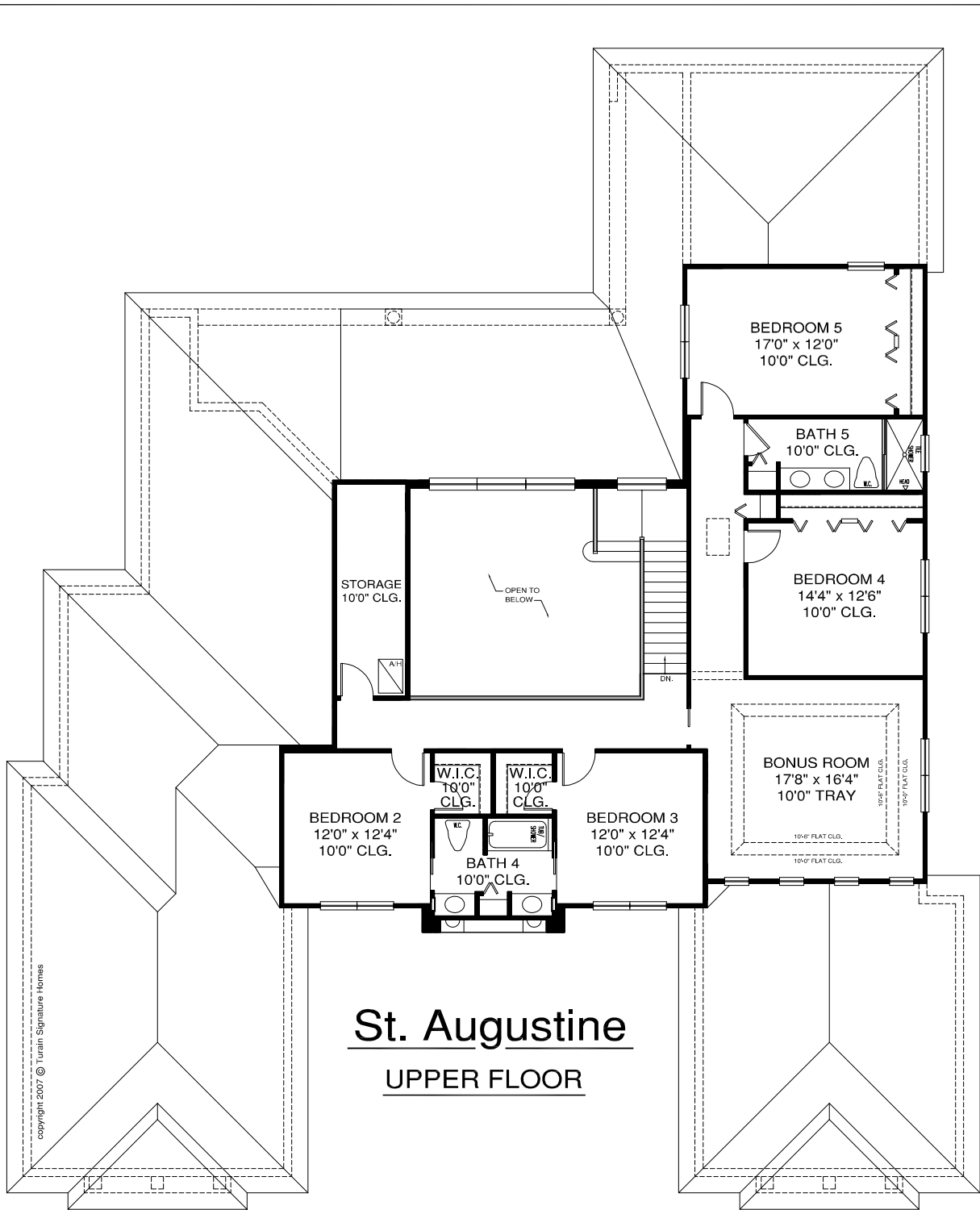


91'-0"
77'-0"



Greg Turain
19123 Centre
Rose Blvd.
Lutz, Florida 33558
813.714.3538
office
813.926.8518
fax
Greg@TurainSignatureHomes.com

Approx. Main Living Area:	3,214 Sq. Ft.
Approx. Upper Living Area:	1,707 Sq. Ft.
Approx. Total Living Area:	4,921 Sq. Ft.
Garage 1:	461 Sq. Ft.
Garage 2:	493 Sq. Ft.
Lanai:	622 Sq. Ft.
Entry:	49 Sq. Ft.
Storage:	36 Sq. Ft.
Total Under Roof:	6,582 Sq. Ft.

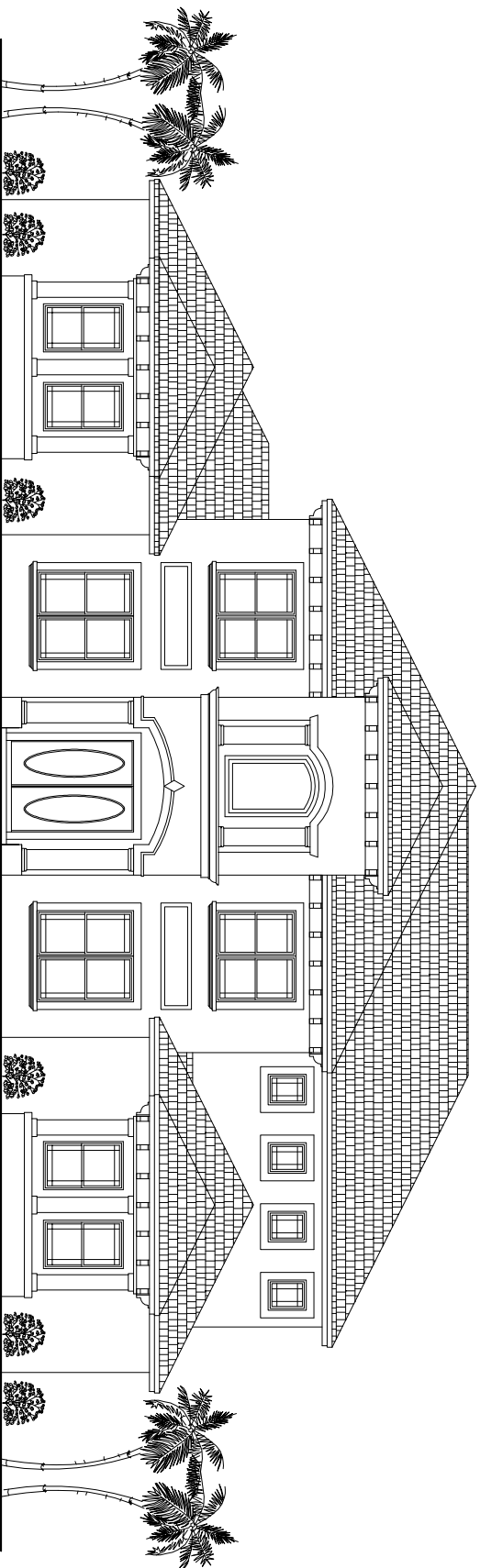


St. Augustine
UPPER FLOOR

copyright 2007 © Turain Signature Homes



Greg Turain
 19123 Centre
 Rose Blvd.
 Lutz, Florida 33558
 813.714.3538
 office
 813.926.8518
 fax
 Greg@TurainSignatureHomes.com



copyright 2007 © Turain Signature Homes

St. Augustine



Greg Turain
19123 Centre
Rose Blvd.
Lutz, Florida 33558
813.714.3538
office
813.926.8518
fax
Greg@TurainSignatureHomes.com